

# LANDING AT PGA WATERWAY - REPLAT

BEING A REPLAT OF THE LANDING AT PGA WATERWAY, AS RECORDED IN PLAT BOOK 136, PAGES 39 THROUGH 42, PUBLIC RECORDS OF PALM BEACH COUNTY, FLORIDA AND AN UNPLATTED PORTION OF THE SOUTHEAST QUARTER OF SECTION 5, TOWNSHIP 42 SOUTH, RANGE 43 EAST CITY OF PALM BEACH GARDENS, PALM BEACH COUNTY, FLORIDA

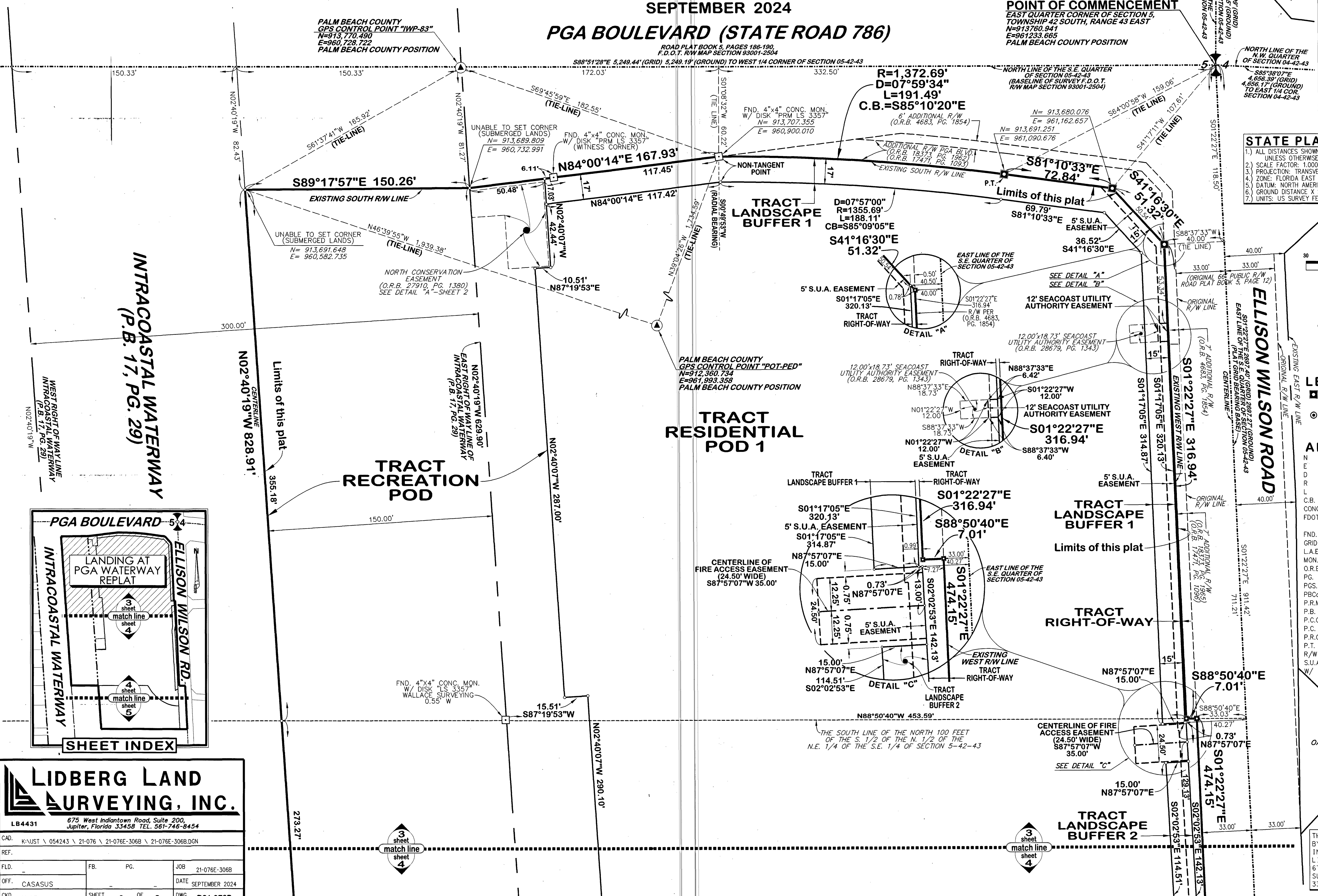
SEPTEMBER 2024

## PGA BOULEVARD (STATE ROAD 786)

ROAD PLAT BOOK 5, PAGES 186-190, F.D.O.T. R/W MAP SECTION 93001-2504

### POINT OF COMMENCEMENT

EAST QUARTER CORNER OF SECTION 5, TOWNSHIP 42 SOUTH, RANGE 43 EAST  
N=913760.941  
E=961233.665  
PALM BEACH COUNTY POSITION

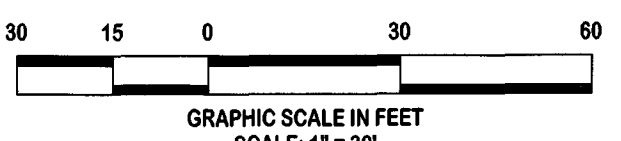


152

NORTH

SHEET 3 OF 5

- STATE PLANE NOTES:**
- 1) ALL DISTANCES SHOWN HEREON ARE GROUND DISTANCES, UNLESS OTHERWISE NOTED.
  - 2) SCALE FACTOR: 1.000047877
  - 3) PROJECTION: TRANSVERSE MERCATOR
  - 4) ZONE: FLORIDA EAST
  - 5) DATUM: NORTH AMERICAN DATUM OF 1983/1990 ADJUSTMENT
  - 6) GROUND DISTANCE X SCALE FACTOR = GRID DISTANCE
  - 7) UNITS: US SURVEY FEET



PARCEL E  
OAK BROOK CORPORATE CENTRE  
(P.B. 84, PGS. 109-111)

- LEGEND:**
- = DENOTES SET "PRM" SET 4"x4" CONC. MON. W/ DISK STAMPED "PRM LB 4431"
  - ⊙ = DENOTES SET "PRM" SET MAG NAIL & DISK STAMPED "PRM LB 4431"

- ABBREVIATIONS:**
- N = NORTHING GRID COORDINATE
  - E = EASTING GRID COORDINATE
  - D = CURVE'S DELTA ANGLE
  - R = CURVE'S RADIUS
  - L = CURVE'S ARC LENGTH
  - C.B. = CURVE'S CHORD BEARING
  - CONC. = CONCRETE
  - FDOT = FLORIDA DEPARTMENT OF TRANSPORTATION
  - FND. = FOUND
  - GRID = STATE PLANE BEARING & DISTANCE
  - L.A.E. = LIMITED ACCESS EASEMENT
  - MON. = MONUMENT
  - O.R.B. = OFFICIAL RECORD BOOK
  - PG. = PAGE
  - PGS. = PAGES
  - PBCO = PALM BEACH COUNTY
  - P.R.M. = PERMANENT REFERENCE MONUMENT
  - P.B. = PLAT BOOK
  - P.C.C. = POINT OF COMPOUND CURVATURE
  - P.C. = POINT OF CURVATURE
  - P.R.C. = POINT OF REVERSE CURVATURE
  - P.T. = POINT OF TANGENCY
  - R/W = RIGHT OF WAY
  - S.U.A. = SEACOAST UTILITY AUTHORITY
  - W/ = WITH

PARCEL G  
OAK BROOK CORPORATE CENTRE  
(P.B. 84, PGS. 109-111)  
PRIVATE PLATTED ROAD



**LIDBERG LAND SURVEYING, INC.**

LB4431 675 West Indiantown Road, Suite 200, Jupiter, Florida 33458 TEL. 561-746-8454

CAD. KJ\JST \ 054243 \ 21-076 \ 21-076E-306B \ 21-076E-306B.DGN
REF.
F.L.D. FB. PG. JOB 21-076E-306B
OFF. CASASUS DATE SEPTEMBER 2024
CKD. K.J.B. SHEET 3 OF 5 DWG. D21-076P

THIS INSTRUMENT WAS PREPARED BY KENNETH J. BUCHANAN P.S.M., IN AND FOR THE OFFICES OF LIDBERG LAND SURVEYING, INC., 675 WEST INDIANTOWN ROAD, SUITE 200, JUPITER, FLORIDA 33458. TELEPHONE (561) 746-8454.